



## On the Radar

Issue 476

10 August 2020

*On the Radar* is a summary of some of the recent publications in the areas of safety and quality in health care. Inclusion in this document is not an endorsement or recommendation of any publication or provider. Access to particular documents may depend on whether they are Open Access or not, and/or your individual or institutional access to subscription sites/services. Material that may require subscription is included as it is considered relevant.

*On the Radar* is available online, via email or as a PDF or Word document from <https://www.safetyandquality.gov.au/publications-and-resources/newsletters/radar>

If you would like to receive *On the Radar* via email, you can subscribe on our website <https://www.safetyandquality.gov.au/publications-and-resources/newsletters> or by emailing us at [mail@safetyandquality.gov.au](mailto:mail@safetyandquality.gov.au). You can also send feedback and comments to [mail@safetyandquality.gov.au](mailto:mail@safetyandquality.gov.au).

For information about the Commission and its programs and publications, please visit <https://www.safetyandquality.gov.au>. You can also follow us on Twitter @ACSQHC.

---

### On the Radar

Editor: Dr Niall Johnson [niall.johnson@safetyandquality.gov.au](mailto:niall.johnson@safetyandquality.gov.au)

Contributors: Niall Johnson

### COVID-19 resources

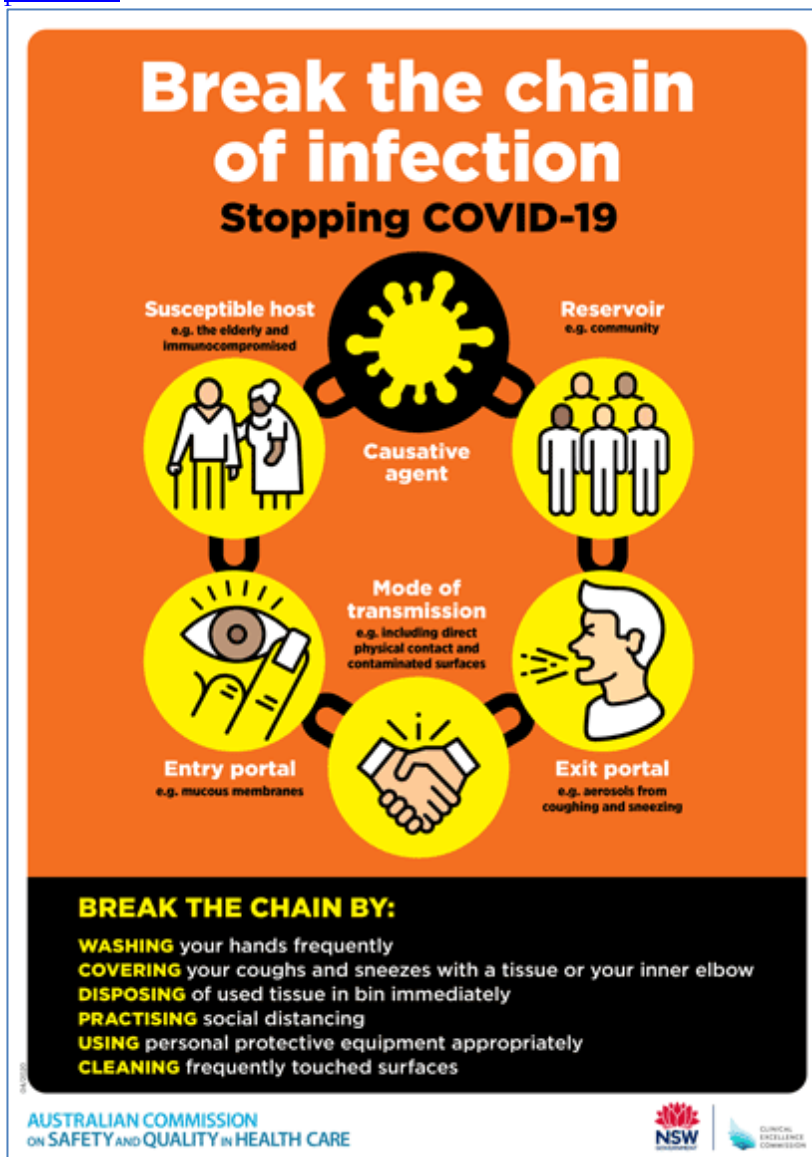
<https://www.safetyandquality.gov.au/covid-19>

The Australian Commission on Safety and Quality in Health Care has developed a number of resources to assist healthcare organisations, facilities and clinicians. These and other material on COVID-19 are available at <https://www.safetyandquality.gov.au/covid-19>

The latest additions include:

- **Medicines Management COVID-19** <https://www.safetyandquality.gov.au/our-work/medication-safety/medicines-management-covid-19>, including position statements on medicine-related issues
  - *Managing fever associated with COVID-19*
  - *Managing a sore throat associated with COVID-19*
  - *ACE inhibitors and ARBs in COVID-19*
  - *Clozapine in COVID-19*
  - *Management of patients on oral anticoagulants during COVID-19*
  - *Ascorbic Acid: Intravenous high dose in COVID-19*
  - *Treatment in acute care, including oxygen therapy and medicines to support intubation*
  - *Nebulisation and COVID-19*

- *Managing intranasal administration of medicines during COVID-19*
- *Ongoing medicines management in high-risk patients*
- *Medicines shortages*
- *Potential medicines to treat COVID-19*  
<https://www.safetyandquality.gov.au/publications-and-resources/resource-library/potential-medicines-treat-covid-19>
- *Break the chain of infection: Stopping COVID-19* poster  
<https://www.safetyandquality.gov.au/publications-and-resources/resource-library/break-chain-poster-a3>



- *COVID-19: Elective surgery and infection prevention and control precautions*  
<https://www.safetyandquality.gov.au/publications-and-resources/resource-library/covid-19-elective-surgery-and-infection-prevention-and-control-precautions>
- *FAQs for clinicians on elective surgery* <https://www.safetyandquality.gov.au/node/5724>
- *FAQs for consumers on elective surgery* <https://www.safetyandquality.gov.au/node/5725>
- *Infection prevention and control Covid-19 PPE* poster  
<https://www.safetyandquality.gov.au/publications-and-resources/resource-library/infection-prevention-and-control-covid-19-personal-protective-equipment>

- **Special precautions for Covid-19 designated zones** poster  
<https://www.safetyandquality.gov.au/publications-and-resources/resource-library/special-precautions-covid-19-designated-zones>
- **COVID-19 infection prevention and control risk management – Guidance**  
<https://www.safetyandquality.gov.au/publications-and-resources/resource-library/covid-19-infection-prevention-and-control-risk-management-guidance> The Commission has prepared this guidance to support health service organisations to undertake COVID-19 risk assessment and develop a comprehensive Risk Management Plan. The guidance acknowledges the ongoing risks associated with COVID-19 in Australia. Health service organisations are required to prepare and implement an organisation-wide Risk Management Plan to manage and reduce the risks related to the transmission of COVID-19.
- **Safe care for people with cognitive impairment during COVID-19**  
<https://www.safetyandquality.gov.au/our-work/cognitive-impairment/cognitive-impairment-and-covid-19>
- **FAQs on community use of face masks**  
<https://www.safetyandquality.gov.au/faqs-community-use-face-masks>
- **COVID-19 and face masks – Information for consumers**  
<https://www.safetyandquality.gov.au/publications-and-resources/resource-library/covid-19-and-face-masks-information-consumers>

**AUSTRALIAN COMMISSION**  
ON SAFETY AND QUALITY IN HEALTH CARE

**INFORMATION**  
for consumers

## COVID-19 and face masks

### Should I use a face mask?

Wearing face masks may protect you from droplets (small drops) when a person with COVID-19 coughs, sneezes or sneezes, and you are less than 1.5 metres away from them. Wearing a mask will also help protect others if you are infected with the virus, but do not have symptoms of infection.

Wearing a face mask in Australia is recommended by health experts in areas where community transmission of COVID-19 is high, whenever physical distancing is not possible. Deciding whether to wear a face mask is your personal choice. Some people may feel more comfortable wearing a face mask in the community.


When thinking about whether wearing a face mask is right for you, consider the following:

- Face masks may protect you when it is not possible to maintain the 1.5 metre physical distance from other people e.g. on a crowded bus or train
- Are you older or do you have other medical conditions like heart disease, diabetes or respiratory illness? People in these groups may get more severe illness if they are infected with COVID-19
- Wearing a face mask will reduce the spread of droplets from your coughs and sneezes to others (however, if you have any cold or flu-like symptoms you should stay home)
- A face mask will not provide you with complete protection from COVID-19. You should also do all of the other things listed below to prevent the spread of COVID-19.

### What can you do to prevent the spread of COVID-19?

Stopping the spread of COVID-19 is everyone's responsibility. The most important things that you can do to protect yourself and others are to:

- Stay at home when you are unwell, with even mild respiratory symptoms
- Regularly wash your hands with soap and water or use an alcohol-based hand rub
- Do not touch your face
- Do not touch surfaces that may be contaminated with the virus
- Stay at least 1.5 metres away from other people (physical distancing)
- Cover your mouth when you cough by coughing into your elbow, or into a tissue. Throw the tissue away immediately.



## Reports

### *Evidence-Based Interventions - Engagement document*

Expert Advisory Committee to the Evidence-Based Interventions programme

London: Academy of Medical Royal Colleges; 2020. p. 222.

URL	<a href="https://www.aomrc.org.uk/reports-guidance/evidence-based-interventions-engagement-document/">https://www.aomrc.org.uk/reports-guidance/evidence-based-interventions-engagement-document/</a>
Notes	<p>The UK's Academy of Medical Royal Colleges has an 'Evidence-based interventions' programme that is 'designed to reduce the number of medical or surgical interventions as well as some other tests and treatments which the evidence tells us are inappropriate for some patients in some circumstances and can sometimes do more harm than good.' This is the latest report from the programme and lists 31 tests, treatments and procedures and builds on an earlier list of 17 interventions. This document is an invitation for comments on the 31 interventions with a view to making a final recommendation later this year. The interventions listed include:</p> <ul style="list-style-type: none"> <li>• Diagnostic coronary angiography for low risk, stable chest pain</li> <li>• Repair of minimally symptomatic inguinal hernia</li> <li>• Surgical intervention for chronic sinusitis</li> <li>• Removal of adenoids</li> <li>• Arthroscopic surgery for meniscal tears</li> <li>• Troponin test</li> <li>• Surgical removal of kidney stones</li> <li>• Cystoscopy for men with uncomplicated lower urinary tract symptoms</li> <li>• Surgical intervention for benign prostatic hyperplasia</li> <li>• Discectomy</li> <li>• Radiofrequency facet joint denervation</li> <li>• Exercise ECG for screening for coronary heart disease</li> <li>• Upper GI endoscopy</li> <li>• Appropriate colonoscopy</li> <li>• Repeat Colonoscopy</li> <li>• ERCP in acute gallstone pancreatitis without cholangitis</li> <li>• Cholecystectomy</li> <li>• Appendicectomy without confirmation of appendicitis</li> <li>• Low back pain imaging</li> <li>• Knee MRI when symptoms are suggestive of osteoarthritis</li> <li>• Knee MRI for suspected meniscal tears</li> <li>• Vertebroplasty for painful osteoporotic vertebral fractures</li> <li>• Imaging for shoulder pain</li> <li>• MRI scan of the hip for arthritis</li> <li>• Fusion surgery for mechanical axial low back pain</li> <li>• Helmet therapy for treatment of positional plagiocephaly/brachycephaly in children</li> <li>• Pre-operative chest x-ray</li> <li>• Pre-operative ECG</li> <li>• Prostate-specific antigen (PSA) test</li> <li>• Liver function, creatinine kinase and lipid level tests – (Lipid lowering therapy)</li> <li>• Blood transfusion.</li> </ul>

## Journal articles

### *A Review of Models Used for Investigating Barriers to Healthcare Access in Australia*

Shukla N, Pradhan B, Dikshit A, Chakraborty S, Alamri AM

International Journal of Environmental Research and Public Health. 2020;17(11):4087.

DOI	<a href="https://doi.org/10.3390/ijerph17114087">https://doi.org/10.3390/ijerph17114087</a>
Notes	Access to health care – and equity of access – are important aspects of a health care system. This paper reviews some of the approaches that have been taken to examining access to care in Australia. The authors note that ‘Understanding barriers to healthcare access is a multifaceted challenge, which is often highly diverse depending on location and the prevalent surroundings. The barriers can range from transport accessibility to socio-economic conditions, ethnicity and various patient characteristics.’ The authors report that ‘In terms of barriers, the most affected people are those living in rural and remote parts, and the situation is even worse for indigenous people. These models have mostly focused on the use of statistical models and spatial modeling. The review reveals that most of the focus has been on cancer-related studies and understanding accessibility among the rural and urban population. Future work should focus on further categorizing the population based on indigeneity, migration status and the use of advanced computational models.’

### *Compared With Other Countries, Women In The US Are More Likely Than Men To Forgo Medicines Because Of Cost*

Daw JR, Law MR

Health Affairs. 2020;39(8):1334-1342.

DOI	<a href="https://doi.org/10.1377/hlthaff.2019.01554">https://doi.org/10.1377/hlthaff.2019.01554</a>
Notes	While this article focuses on the finding that younger women in the USA were more likely to report ‘cost-related nonadherence’ than men, it also notes that they ‘found smaller but significant female–male differences among younger women in Australia’. Using data from the regular Commonwealth Fund International health Policy survey that surveys a group of high-income nations, including Australia, the study found that the US (and to a lesser extent Canada and Australia) had greater overall cost-related nonadherence to prescription medications and greater difference in cost-related nonadherence between younger women and men. The authors note that ‘Medication nonadherence is associated with adverse clinical outcomes for chronic conditions such as diabetes and hypertension’ and that ‘sex differences in cost-related nonadherence ... may produce important sex-related disparities in health outcomes’.

### *Patient feedback for safety improvement in primary care: results from a feasibility study*

Hernan AL, Giles SJ, Beks H, McNamara K, Kloot K, Binder MJ, et al

BMJ Open. 2020;10(6):e037887.

DOI	<a href="http://dx.doi.org/10.1136/bmjopen-2020-037887">http://dx.doi.org/10.1136/bmjopen-2020-037887</a>
Notes	Primary care is something of an unknown in terms of the scale and nature of the safety and quality issues that may exist. This Australian study reports on a study that sought to examine the feasibility of patient feedback for safety improvements in the sector, including surveying 1,750 patients from 6 Australian primary care practices. The authors believe that this patient feedback on safety intervention is feasible for scaling up.

For information on the Commission’s work on primary care, see

<https://www.safetyandquality.gov.au/our-work/primary-health-care>



For information on the Commission's work on partnering with consumers, see <https://www.safetyandquality.gov.au/our-work/partnering-consumers>

*Australian Health Review*

Volume 44, Number 4, August 2020

URL	<a href="https://www.publish.csiro.au/ah/issue/9737">https://www.publish.csiro.au/ah/issue/9737</a>
Notes	<p>A new issue of <i>Australian Health Review</i> has been published. Articles in this issue of <i>Australian Health Review</i> include:</p> <ul style="list-style-type: none"> <li>• There can be <b>no quality without equity</b> (Derek Feeley)</li> <li>• <b>Positives to be found in COVID response</b> (Bronwyn Evans)</li> <li>• Assessing the support of health leadership for <b>increased Indigenous participation in the health workforce</b> (Christopher Bourke, Julie Lahn, Colleen Gibbs and Natasha Lennard)</li> <li>• Risk factors for <b>non-participation in a universal developmental surveillance program</b> in a population in Australia (Chandra Ayer, Valsamma Eapen, Bronwyn Overs, Joseph Descallar, Bin Jalaludin, John Graeme Eastwood, Cheryl Dissanayake, Katrina Williams, Elisabeth Murphy, Susan Woolfenden and for the Watch Me Grow Study Group)</li> <li>• Promoting <b>hospital and primary care collaboration</b> for timely and effective care for <b>chronic hepatitis B</b> in western Melbourne (Katherine Sievert, Rachel Liddle, Annie Tan, Niranjan Arachchi, Zina Valaydon and Nicole Allard)</li> <li>• Responsibility for <b>evidence-based policy in cardiovascular disease in rural communities</b>: implications for persistent rural health inequalities (Laura Alston, Lisa Bourke, Melanie Nichols and Steven Allender)</li> <li>• Provision of a consistent national approach to <b>radiation therapy workforce protection</b> measures in Australia during the COVID-19 pandemic (Min Ku, Tanya Morgan, Alan Malbon, Timothy Bartram, J Cavanagh and B Halvorsen)</li> <li>• <b>Are pharmacists willing to work in disasters?</b> (Elizabeth M. McCourt, Kaitlyn E Watson, Judith A Singleton, Vivienne Tippet and Lisa M. Nissen)</li> <li>• Quantitative <b>fit testing</b> with limited supplies of <b>respirator masks</b> in hospital personnel during the COVID-19 pandemic (Shanel Cameron, Winston Cheung, Nigel Cronin, Karina Griffiths, Rhiannon Hunt, Lesley Innes, Mark Kol, Amy Lawrence, Asim Shah, Katina Skylas, Atul Wagh and The Sydney Local Health District Mask Fit Investigators (in alphabetical order))</li> <li>• Evidence-based law making on <b>voluntary assisted dying</b> (Ben P White and Lindy Willmott)</li> <li>• It's time for the mandatory use of <b>simulation and human factors in hospital design</b> (Brooke Dench, Stephanie Barwick and Melanie Barlow)</li> <li>• <b>Predictors of ED attendance in older patients with chronic disease</b>: a data linkage study (Ting Xia, Joanne Enticott, Christopher Pearce, Danielle Mazza and Lyle R Turner)</li> <li>• Scoping review of Australian <b>evaluations of healthcare delivery models</b>: are we making the most of the evidence? (Jacqueline Roseleur, Andrew Partington and Jonathan Karnon)</li> <li>• <b>Integrating a pharmacist into the perioperative setting</b> (Tori G Forrester, Sara Sullivan, Centaine L Snoswell, Peter Pillans, M Barras and D Sturgess)</li> <li>• Strengthening care for children: pilot of an <b>integrated general practitioner–paediatrician model of primary care</b> in Victoria, Australia (Harriet Hiscock, Rachel O'Loughlin, Rachel Pelly, Catherine Laird, Jessica Holman, Kim Dalziel, Shaoke Lei, Douglas Boyle and Gary Freed)</li> </ul>

	<ul style="list-style-type: none"> <li>• Efficiency gains from a standardised approach to <b>older people presenting to the emergency department after a fall</b> (Glenn Arendts, Naomi Leyte, Sandra Dumas, Shabana Ahamed, Vethanjaly Khokulan, Ouday Wahbi, Andrea Lomman, David Hughes, Vanessa Clayden and Bhaskar Mandal)</li> <li>• Does policy change to allow <b>pharmacist provision of influenza vaccination</b> increase population uptake? A systematic review (Jean Spinks, Emilie Bettington, Martin Downes, Lisa Nissen and Amanda Wheeler)</li> <li>• <b>Evaluation of HealthPathways</b>: an appraisal of usage, experiences and opinions of healthcare professionals in Australia and New Zealand (Arran Goddard-Nash, Marshall Makate, Richard Varhol, Frances Quirk, Richard Larsen, Graham McGeoch, Brett Shand and Suzanne Robinson)</li> <li>• <b>Service use of young people with Type 1 diabetes</b> after transition from paediatric to adult-based diabetes health care (Lin Perry, Janet Dunbabin, Xiaoyue Xu, Julia Lowe, Shamasunder Acharya, S James and K S Steinbeck)</li> <li>• <b>Emotional exhaustion among regional doctors in training</b> and the application of international guidelines on sustainable employability management for organisations (Madeleine Fitzpatrick, Kathryn Garsia, Kezia Eyre, Courtney-Anne Blackhall and Sabrina Pit)</li> <li>• Development of a <b>physiotherapy-led bronchoscopy service</b>: a regional hospital perspective (Jane Lockstone, Ianthe Boden, Nadia Zalucki, James Darvas and Scott Parkes)</li> <li>• Evolving experience of operating theatre staff with the implementation of <b>robotic-assisted surgery in the public sector</b> (Daniel Steffens, Kate E McBride, Rachael Roberts, Paul G Bannon and Michael J Solomon)</li> <li>• Estimating the prevalence of <b>life-limiting conditions in Queensland for children and young people</b> aged 0–21 years using health administration data (Alison P Bowers, Raymond J Chan, Anthony Herbert and Patsy Yates)</li> <li>• Characterising the number and type of <b>presentations to a tertiary emergency department by young people affected by drugs and alcohol</b> (Yusuf Nagree and Ben Darwent)</li> <li>• Sociodemographic and health risk profile associated with participation in a <b>private health insurance weight loss maintenance and chronic disease management program</b> (Bronwyn McGill, Blythe J. O'Hara, Anne C. Grunseit, Adrian Bauman, Luke Lawler and Philayrath Phongsavan)</li> <li>• Cancer patients' use of and attitudes towards <b>medicinal cannabis</b> (Allison Drosdowsky, Sarah Blaschke, Trista Koproski, Sonia Fullerton, Arti Thakerar, Steve Ellen, Jo Phipps-Nelson and Corry de Neef)</li> </ul>
--	--

*American Journal of Medical Quality*

Volume: 35, Number: 4 (July/August 2020)

URL	<a href="https://journals.sagepub.com/toc/ajmb/35/4">https://journals.sagepub.com/toc/ajmb/35/4</a>
Notes	<p>A new issue of the <i>American Journal of Medical Quality</i> has been published. Articles in this issue of the <i>American Journal of Medical Quality</i> include:</p> <ul style="list-style-type: none"> <li>• <b>Learning Collaboratives in Medical Education</b>: Exploring the Impact of Collaboratives' Structure and Resources and Teams' Experience (Robert Dressler, Hania Janek, Lauren Sager, David S. Kountz, and Judi Gravdal)</li> <li>• Ongoing and Focused <b>Provider Performance Evaluations in Emergency Medicine</b>: Current Practices and Modified Delphi to Guide Future Practice (Laura E. Walker, Michael P. Phelan, Matthew Bitner, Eric Legome, Christian A. Tomaszewski, Robert W. Strauss, Jr, and David M. Nestler)</li> </ul>

	<ul style="list-style-type: none"> <li>Improving <b>Depression Screening</b> in Underserved Populations in a Large Urban Academic Primary Care Center: A Provider-Centered Analysis and Approach (Tracey L. Henry, Stacie Schmidt, Maha B. Lund, Tamara Haynes, D Ford, H Egwuogu, S Schmitz, B McGregor, L Toomer, and J Bussey-Jones)</li> <li><b>Goal-Directed Achievement Through Geographic Location (GAGL)</b> Reduces Patient Length of Stay and Adverse Events (Michael J Maniaci, Nancy L Dawson, Jennifer B Cowart, Eugene M Richie, Anil G Suryaprasad, David O Hodge, Nicole E Joyce, Carol A Kernan, Laurie A Stone, and M C Burton)</li> <li>Integrating <b>Lean Thinking and Implementation Science Determinants Checklists</b> for Quality Improvement: A Scoping Review (Taylor Standiford, Marisa L Conte, John E Billi, Anne Sales, and Geoffrey D Barnes)</li> <li>Application of <b>Artificial Intelligence in the Health Care Safety Context: Opportunities and Challenges</b> (Samer Ellahham, Nour Ellahham, and Mecit Can Emre Simsekler)</li> <li>Writing Group Increases <b>Quality Improvement Writing Competency</b> (Julie Balch Samora, Sandra P Spencer, Jahn timer Valleru, Thomas Bartman, Richard J Brilli, Melody Davis, J Terrance Davis, Richard McClead, and Wallace Crandall)</li> <li>Q-Tip: Implementation of a Text-Based, HIPAA-Compliant Event Reporting Process to Increase <b>Event Reporting by Resident Physicians</b> (Robert Benson Jones, Jr, Courtney L. Devin, Divya Chalikonda, and Rebecca Jaffe)</li> <li>Q-Tip: <b>Reducing Blood Wastage</b> in a Large Level I Trauma Center (Amber Whitley, Brittany Stewart, Michael Passwater, Keosha Joyner, and Susan Weiss)</li> </ul>
--	--

*Patient Experience Journal (PXJ)*

Volume 7, Issue 2 (2020)

URL	<a href="https://pxjournal.org/journal/vol7/iss2/">https://pxjournal.org/journal/vol7/iss2/</a>
Notes	<p>A special issue of the <i>Patient Experience Journal (PXJ)</i> has been published with the theme ‘<b>Sustaining Human Experience in the Face of COVID-19</b>’. Articles in this issue of the <i>Patient Experience Journal (PXJ)</i> include:</p> <ul style="list-style-type: none"> <li>Editorial: <b>A commitment to hope</b> (Jason A Wolf and Geoffrey A Silvera)</li> <li><b>Leadership matters</b>: A conversation with Dr. James Hildreth (Jason A Wolf)</li> <li><b>Getting comfortable with being uncomfortable</b>: A conversation with Marsha Sinanan-Vasishta (Jason A Wolf)</li> <li>Is this really happening? <b>Family-centered care during COVID-19</b>: People before policy (Terri Savino and Karri Crispino)</li> <li>Beyond platitudes: A nurse’s journey of <b>self-reflection and vulnerability</b> (Monica Friesen)</li> <li>Treading water: <b>Coping with uncertainty</b> during a novel pandemic (S Patel)</li> <li><b>Caring for kids in the time of COVID-19</b> (Laurie S Strongin)</li> <li><b>Chronic pain, vulnerability and human spirit</b> while living under the umbrella of COVID-19 (Richard B Hovey, D Linkiewicz., and M Brachaniec)</li> <li>Thoughts of a <b>palliative care</b> nurse in times of pandemic (Angela L Simões)</li> <li>Focusing on <b>positivity</b> during the COVID-19 crisis: A New York health system strategy (Sven Gierlinger and Agnes Barden)</li> <li>A <b>COVID-19 patient’s experience</b>: Engagement in disease management, interactions with care teams and implications on health policies and managerial practices (Lihua Dishman and Vicki Schroeder)</li> </ul>



	<ul style="list-style-type: none"> <li>• Insights from individuals with <b>chronic conditions in the context of COVID-19</b> (B Stephen Burton, Jonathan Patterson, Mackenzie Robinson, Dhiren Patel, Matt Allison, and Kelly J Brassil)</li> <li>• <b>Patient experience in a pediatric emergency department during COVID-19</b> (Beth L Emerson and Erika Setzer)</li> <li>• An extensive review of <b>patient satisfaction</b> with healthcare services in Bangladesh (Abdul Kader Mohiuddin)</li> <li>• The rapid increase in <b>telemedicine visits during COVID-19</b> (Chelsea Johnson, Kathryn Taff, Brian R. Lee, and Amanda Montalbano)</li> <li>• How University of Chicago Medicine designed <b>virtual rounding</b> to maintain human connections during COVID-19 (Susan M Murphy)</li> <li>• TeleBoard: The move to a <b>virtual family advisory board</b> (Sheryl Chadwick, DeeJo Miller, Kathryn Taff, and Amanda Montalbano)</li> <li>• A <b>comprehensive call center</b> supporting safe, efficient operations during a pandemic (Janice P Finder, Ashlyn Proske, Judy Overton, Elizabeth Comcowich Garcia, and Michael Frumovitz)</li> <li>• Out of sight, but not out of mind: <b>Keeping connections alive during COVID-19</b> (Katie Braun)</li> <li>• Patients and families strengthen <b>COVID-19 communication</b> across Los Angeles County (Lindsey Galli and Libby Hoy)</li> <li>• Maintaining a <b>positive patient experience during COVID-19</b> in a rehabilitation and complex care setting (Sarah Benn Orava, Kim Cook, and Amanda Brown)</li> <li>• <b>Positive patient experience</b> in eye care during COVID-19: A case from Eye Hospital Sistina Oftalmologija (Vesna Cado)</li> <li>• Family Connect: <b>Keeping families informed</b> during the COVID-19 pandemic (Brittany Branson, Anne K Wilkinson, Jaya Sondhi, Irma Dadic, Devin M Giguere, Rachel Ramsey, Regina Grinblat, and K A Hochman)</li> <li>• Johns Hopkins Medicine responds to COVID-19: <b>Adjusting patient- family- and staff-centered care</b> (Stacy L C Colimore, Lisa Allen, Zach Lawrence, Nicole Iarrobino, Sylvia Kavouriou, Adey Betre, Chevaunne Edwards, Amel Elshinawi, Lisa Filbert, Tameka Glenn, Jade Hewitt, Lisa Jibril, Brittney Lawrence, Ariel Mabry, Deborah Miller, Nicole Pritchett, and Heather Webb)</li> <li>• Leveraging the <b>agility of the care experience dyad partnership model</b> during COVID-19 (Vanessa Mona and Rana Awdish)</li> <li>• <b>Caring for our caregivers</b> in body, mind and spirit during the COVID-19 pandemic (Rick Evans, Philip J Wilner, and Kristen Spillane)</li> <li>• <b>Nursing leadership during COVID-19</b>: Enhancing patient, family and workforce experience (Anne Aquilia, Karen Grimley, Barbara Jacobs, Maryellen Kosturko, Jerry Mansfield, Charlotte Mathers, Peggie Parniawski, Laura Wood, and Victoria Niederhauser)</li> <li>• My six-word story: <b>Power to reconnect and connect</b> (Alexie Puran)</li> <li>• Flattening the curve of distress: A public-facing webinar for <b>psychoeducation during COVID-19</b> (Grant Smith, Stephanie Harman, and Keri Brenner)</li> <li>• Cards from the community: Engagement of the local community to enhance <b>patient and staff experience during the COVID-19 pandemic</b> (B Branson)</li> <li>• <b>Micro-volunteering at scale</b> can help health systems respond to emergencies, such as the Covid-19 pandemic (Neil Churchill)</li> </ul>
--	--

URL	<a href="https://www.longwoods.com/publications/healthcare-quarterly/26270/1/vol.-23-no.-2-2020">https://www.longwoods.com/publications/healthcare-quarterly/26270/1/vol.-23-no.-2-2020</a>
Notes	<p>A new issue of <i>Healthcare Quarterly</i> has been published. Articles in this issue of <i>Healthcare Quarterly</i> include:</p> <ul style="list-style-type: none"> <li>• <b>Coordination of Care</b> Could Improve: Canadian Results from the Commonwealth Fund International Health Policy Survey of Primary Care Physicians (Vanessa Sovran, Alison Ytsma, Liudmila Husak and T Johnson)</li> <li>• In a Time of Need: A Grassroots Initiative in Response to <b>PPE Shortage in the COVID-19 Pandemic</b> (Meera Shah, Jordan Ho, Adrina Zhong, Matthew Fung, Mario Elia, Janet Dang and Thomas R Freeman)</li> <li>• <b>COVID-19 and SARS</b> – Learnings from Two Health Systems: Australia and Canada (Sue Matthews)</li> <li>• <b>Austerity and COVID-19</b> (Kwame McKenzie)</li> <li>• Sustaining <b>Social Distancing and Mass Quarantine in the COVID-19 Era: Lessons Learned</b> (Umair Majid, Simran Bakshi, Judy Truong and A Wasim)</li> <li>• Building and Sustaining a <b>Culture of Innovation</b> in an Academic Health Centre (Rukhsana Merchand, Doug Miron, Sean Peacocke and Kathryn Parker)</li> <li>• Fostering <b>Clinical Research in the Community Hospital: Opportunities and Best Practices</b> (Adrian Snihur, Anne Mullin, Andrew Haller, Ryan Wiley, Patrick Clifford, Katie Roposa, Paul MacPherson and Linnea Aasen-Johnston)</li> <li>• A Post-Merger <b>Value Realization Framework</b> for a Large Community Hospital (Christa Hruska, Alfred Ng, Michele James and Cedimir Tosevski)</li> <li>• Building a <b>Primary Care Community of Practice: SCOPE</b> as a Platform for Care Integration and System Transformation (Pauline Pariser, Haley Gush, Noah Ivers and Steve Pomedli)</li> <li>• <b>Team Processes in Canadian Primary HealthCare: A Realist Review</b> (Maura MacPhee, Geoffrey Wong, Ruth Abrams and Katelyn Merrett)</li> <li>• <b>Maintaining Operations and Staff Morale Amid Redevelopment and Construction</b> (Alice Geertsen)</li> <li>• Novel Combined Clinical and Research Protocol to <b>Reduce Wait Times for Cardiac Magnetic Resonance</b> (Idan Roifman, Mary Li and Kim A Connelly)</li> <li>• Supporting Asthma and COPD Best Practices in Ontario through <b>Primary Care Electronic Medical Records</b> (Ann Taite, Janice Minard, Alison Morra and M. Diane Loughheed)</li> </ul>

URL	<a href="https://www.healthaffairs.org/toc/hlthaff/39/8">https://www.healthaffairs.org/toc/hlthaff/39/8</a>
Notes	<p>A new issue of <i>Health Affairs</i> has been published with the themes of '<b>COVID-19, Home Health &amp; More</b>'. Articles in this issue of <i>Health Affairs</i> include:</p> <ul style="list-style-type: none"> <li>• <b>Contraceptive Mandate, ACA Final Rules, And COVID-19</b> (Katie Keith)</li> <li>• From Rural Germany, <b>Integrated Care</b> Grows Into A Global Model (Michele Cohen Marill)</li> <li>• Receipt Of <b>Home-Based Medical Care</b> Among Older Beneficiaries Enrolled In Fee-For-Service Medicare (Jennifer M. Reckrey, Mia Yang, Bruce Kinoshian, Evan Bollens-Lund, Bruce Leff, Christine Ritchie, and Katherine Ornstein)</li> </ul>

	<ul style="list-style-type: none"> <li>• Informal And Formal <b>Home Care For Older Adults With Disabilities</b> Increased, 2004–16 (Courtney H Van Houtven, R Tamara Konetzka, Elizabeth Taggart, and Norma B Coe)</li> <li>• <b>Financial Integration’s Impact On Care Delivery And Payment Reforms:</b> A Survey Of Hospitals And Physician Practices (Elliott S Fisher, Stephen M Shortell, A James O’Malley, Taressa K Frazee, Andrew Wood, Marisha Palm, Carrie H Colla, Meredith B Rosenthal, Hector P Rodriguez, Valerie A Lewis, Steven Woloshin, Nilay Shah, and Ellen Meara)</li> <li>• Trends In <b>Hospitals And Skilled Nursing Facilities Sharing Medical Providers</b>, 2008–16 (Elizabeth M White, Cyrus M Kosar, Momotazur Rahman, and Vincent Mor)</li> <li>• <b>Consolidation Of Providers Into Health Systems</b> Increased Substantially, 2016–18 (Michael F Furukawa, Laura Kimmey, David J Jones, Rachel M Machta, Jing Guo, and Eugene C Rich)</li> <li>• Medicare Part D Plans Rarely Cover Brand-Name Drugs When <b>Generics</b> Are Available (Stacie B Dusetzina, Juliette Cubanski, Leonce Nshuti, Sarah True, Jack Hoadley, Drew Roberts, and Tricia Neuman)</li> <li>• Compared With Other Countries, <b>Women</b> In The US Are More Likely Than Men To <b>Forgo Medicines</b> Because Of Cost (Jamie R Daw, and M R Law)</li> <li>• <b>Return On Investment From Immunization</b> Against 10 Pathogens In 94 Low- And Middle-Income Countries, 2011–30 (So Yoon Sim, Elizabeth Watts, Dagna Constenla, Logan Brenzel, and Bryan N Patenaude)</li> <li>• Costs Are Higher For <b>Marketplace Members</b> Who Enroll During Special Enrollment Periods Compared With Open Enrollment (Laura F Garabedian, Robert LeCates, Alison Galbraith, Dennis Ross-Degnan, and J Frank Wharam)</li> <li>• Income Disparities In <b>Access To Critical Care</b> Services (Genevieve P Kanter, Andrea G Segal, and Peter W Groeneveld)</li> <li>• <b>Veterans’ Experiences With Outpatient Care:</b> Comparing The Veterans Affairs System With Community-Based Care (Megan E Vanneman, Todd H Wagner, M Shwartz, M Meterko, J Francis, C L Greenstone, and A K Rosen)</li> <li>• <b>Food Insecurity</b> Is Associated With Higher Health Care Use And Costs Among Canadian Adults (Fei Men, C Gundersen, M L Urquia, and V Tarasuk)</li> <li>• SNAP Participants Improved <b>Food Security And Diet</b> After A Full-Service Supermarket Opened In An Urban Food Desert (Jonathan Cantor, Robin Beckman, R L Collins, M G Dastidar, A S Richardson, and T Dubowitz)</li> <li>• Primary Care Providers And Specialists Deliver Comparable <b>Buprenorphine Treatment Quality</b> (Alex K Gertner, Allison G Robertson, Byron J Powell, Hendree Jones, Pam Silberman, and Marisa Elena Domino)</li> <li>• <b>Practice And Policy Reset Post-COVID-19:</b> Reversion, Transition, Or Transformation? (Christine Sinsky, and Mark Linzer)</li> <li>• <b>Incarceration</b> And Its Disseminations: <b>COVID-19</b> Pandemic Lessons From Chicago’s Cook County Jail (Eric Reinhart, and Daniel L. Chen)</li> <li>• <b>Community Use Of Face Masks And COVID-19:</b> Evidence From A Natural Experiment Of State Mandates In The US (Wei Lyu, and G L Wehby)</li> <li>• <b>Staffing Up For The Surge:</b> Expanding The New York City Public Hospital Workforce During The <b>COVID-19</b> Pandemic (Chris Keeley, Jonathan Jimenez, Hannah Jackson, L Boudourakis, R J Salway, N Cineas, Y Villanueva, D Bell, A B Wallach, D B Schwartz, I Mendez-Justiniano, and T G Long)</li> <li>• A Phone Call Away: New York’s <b>Hotline And Public Health In The Rapidly Changing COVID-19 Pandemic</b> (Ross Kristal, Madden Rowell,</li> </ul>
--	--

	<p>Marielle Kress, Chris Keeley, Hannah Jackson, Katherine Piwnica-Worms, Lisa Hendricks, Theodore G Long, and Andrew B Wallach)</p> <ul style="list-style-type: none"> <li>• Staying Connected In The <b>COVID-19 Pandemic: Telehealth</b> At The Largest Safety-Net System In The United States (Jen Lau, Janine Knudsen, Hannah Jackson, Andrew B Wallach, Michael Bouton, S Natsui, C Philippou, E Karim, D M Silvestri, L Avalone, M Zaurova, D Schatz, V Sun, and D A Chokshi)</li> <li>• <b>Critical Care And Emergency Department Response</b> At The Epicenter Of The <b>COVID-19</b> Pandemic (Amit Uppal, David M Silvestri, Matthew Siegler, Shaw Natsui, Leon Boudourakis, R James Salway, Manish Parikh, K Agoritsas, H J Cho, R Gulati, M Nunez, A Hulbanni, C Flaherty, L Iavicoli, N Cineas, M Kanter, S Kessler, K V Rhodes, M Bouton, and E K Wei)</li> <li>• <b>An Understaffed Hospital Battles COVID-19</b> (David Scales)</li> <li>• <b>A Patient With COVID-19 Is Left Behind As Care Goes Virtual</b> (Kumara R. Sundar)</li> <li>• <b>Protecting Access To Abortion During The COVID-19 Pandemic</b> (Maryl G. Sackeim)</li> </ul>
--	--

*BMJ Quality & Safety* online first articles

URL	<a href="https://qualitysafety.bmj.com/content/early/recent">https://qualitysafety.bmj.com/content/early/recent</a>
Notes	<p><i>BMJ Quality &amp; Safety</i> has published a number of ‘online first’ articles, including:</p> <ul style="list-style-type: none"> <li>• Prevalence and characterisation of <b>diagnostic error</b> among 7-day all-cause hospital medicine readmissions: a retrospective cohort study (Katie E Raffel, Molly A Kantor, Peter Barish, Armond Esmaili, Hana Lim, Feifei Xue, Sumant R Ranji)</li> <li>• Editorial: <b>Diagnostic error in hospitals</b>: finding forests not just the big trees (Laura Zwaan, Hardeep Singh)</li> <li>• Cost of contact: <b>redesigning healthcare in the age of COVID</b> (R Sacha Bhatia, Kaveh G Shojania, Wendy Levinson)</li> </ul>

*International Journal for Quality in Health Care* online first articles

URL	<a href="https://academic.oup.com/intqhc/advance-articles">https://academic.oup.com/intqhc/advance-articles</a>
Notes	<p><i>International Journal for Quality in Health Care</i> has published a number of ‘online first’ articles, including:</p> <ul style="list-style-type: none"> <li>• The efficiency-thoroughness trade-off after implementation of <b>electronic medication management</b>: a qualitative study in pediatric oncology (Melissa T Baysari, Bethany A Van Dort, Mirela Prgomet, Wu Yi Zheng, Magdalena Z Raban)</li> </ul>

## Online resources

### *National COVID-19 Clinical Evidence Taskforce*

<https://covid19evidence.net.au/>

The National COVID-19 Clinical Evidence Taskforce is a collaboration of peak health professional bodies across Australia whose members are providing clinical care to people with COVID-19. The taskforce is undertaking continuous evidence surveillance to identify and rapidly synthesise emerging research in order to provide national, **evidence-based guidelines and clinical flowcharts for the clinical care of people with COVID-19**. The guidelines address questions that are specific to managing COVID-19 and cover the full disease course across mild, moderate, severe and critical illness. These are 'living' guidelines, updated with new research in near real-time in order to give reliable, up-to-the minute advice to clinicians providing frontline care in this unprecedented global health crisis.

### *COVID-19 Critical Intelligence Unit*

<https://www.aci.health.nsw.gov.au/covid-19/critical-intelligence-unit>

The Agency for Clinical Innovation (ACI) in New South Wales has developed this page summarising rapid, evidence-based advice during the COVID-19 pandemic. Its operations focus on systems intelligence, clinical intelligence and evidence integration. The content includes a daily evidence digest and evidence checks on a discrete topic or question relating to the current COVID-19 pandemic.

Recent evidence checks date include:

- ***Vascular dysfunction and COVID-19***
- ***Extended use or reuse of personal protective equipment***

### *[USA] Effective Health Care Program reports*

<https://effectivehealthcare.ahrq.gov/>

The US Agency for Healthcare Research and Quality (AHRQ) has an Effective Health Care (EHC) Program. The EHC has released the following final reports and updates:

- *Care Interventions for People **Living With Dementia** and Their Caregivers*  
<https://effectivehealthcare.ahrq.gov/products/care-interventions-pwd/report>
- *Retention Strategies for Medications for Addiction Treatment in Adults With **Opioid Use Disorder***  
<https://effectivehealthcare.ahrq.gov/products/retention-strategies-opioid-use-disorder/rapid-research>

---

## Disclaimer

On the Radar is an information resource of the Australian Commission on Safety and Quality in Health Care. The Commission is not responsible for the content of, nor does it endorse, any articles or sites listed. The Commission accepts no liability for the information or advice provided by these external links. Links are provided on the basis that users make their own decisions about the accuracy, currency and reliability of the information contained therein. Any opinions expressed are not necessarily those of the Australian Commission on Safety and Quality in Health Care.