

Healthcare Sustainability and Resilience Module

What does the Module mean for health service organisations?

The Healthcare Sustainability and Resilience Module is a framework of actions for health service organisations to integrate environmental sustainability and climate resilience into the safety and quality of care.

Sustainability and resilience are needed for high-quality care

The Australian Commission on Safety and Quality in Health Care (the Commission) recognises the importance of delivering sustainable healthcare services and reducing harms from their environmental impact. It is equally important that resilient healthcare services remain accessible and effective in improving patient outcomes despite the changing climate risks.

High-quality health care is safe, accessible, effective, integrated and person-centred. At a health system level, it is efficient, sustainable and equitable - and reduces avoidable impact on the environment and the subsequent risks to patients from unnecessary care.

The Module complements existing safety and quality standards

The Module is applied with other national safety and quality standards developed by the Commission. Implementation will vary widely across settings, as the safety and quality systems will vary, depending on the size of the organisation and the risks associated with the services being delivered.

Actions for health service organisations in the Module

- Governance, leadership and culture (Action 1)
- Evidence-based care and health outcomes (Action 2)
- Measurement and quality improvement (Action 3)
- Safety and quality training (Action 4)
- Communication that supports effective partnerships (Action 5)

Frequently asked questions

Why is it called a Module?

It is a small set of actions for health service organisations that are added onto another set of the Commission's safety and quality standards, such as the National Safety and Quality Health Service (NSQHS) Standards.

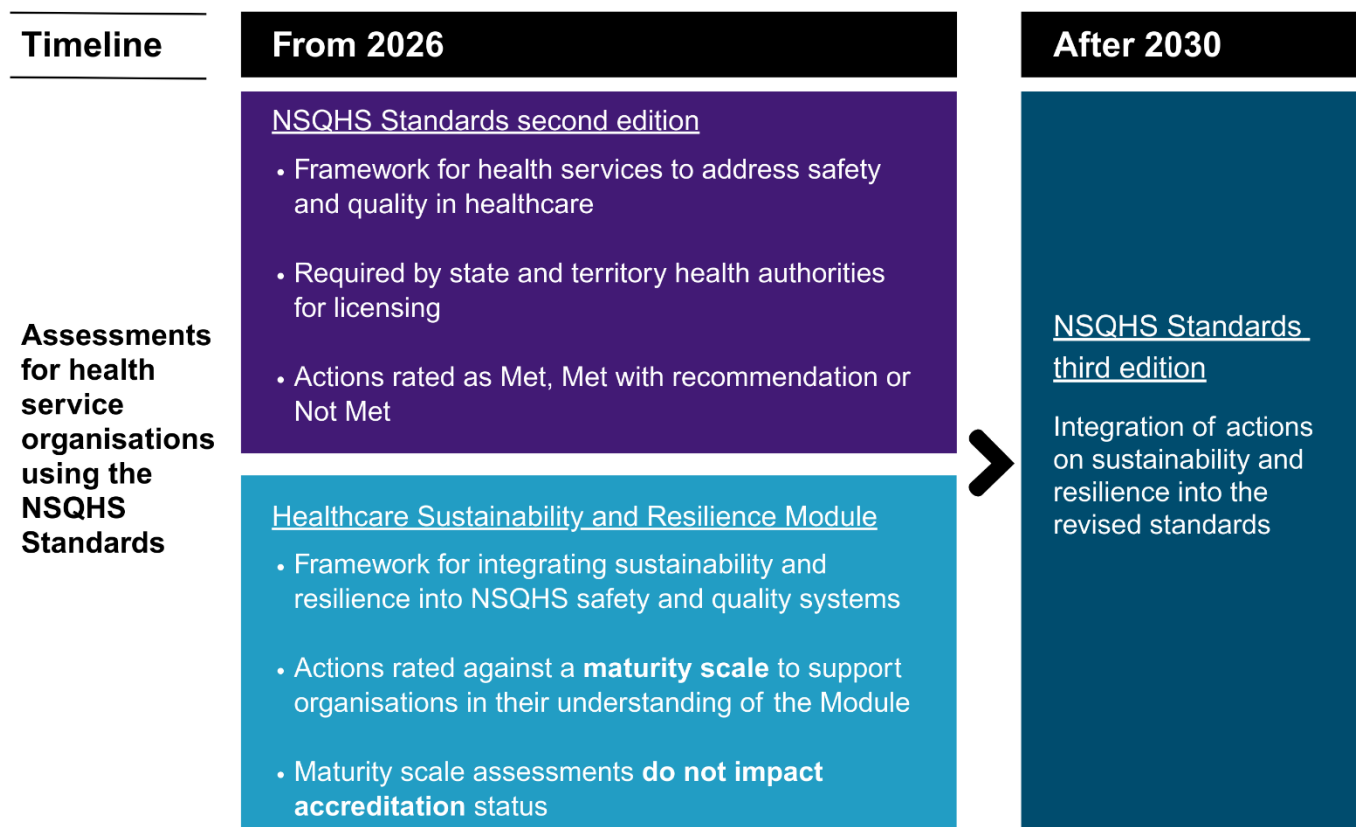
Will it affect accreditation?

Assessments to the Module do not impact assessments to any other safety and quality standards. Rather than receiving an outcome of 'Met', 'Met with recommendation' or 'Not met', the actions in the Module will be against a maturity scale that supports health services to understand and plan following assessments.

Is it a mandatory Module?

Healthcare sustainability and resilience are part of providing high-quality care. It is anticipated that the NSQHS Standards (third edition) will include sustainability and resilience – see **Figure 1**. Health services who undergo assessment to the Module will better understand their readiness to meet the NSQHS Standards (third edition). State and territory health authorities decide the mandatory requirements for health service organisations.

Figure 1 Timeline of assessments using NSQHS Standards and the Module



Will the Commission provide implementation resources?

Yes. The Commission is working with its advisory group to develop a self-assessment tool, fact sheets, case studies and implementation resources ahead of incorporating the Module into an accreditation scheme by 2026.

For more information

Please visit: <https://www.safetyandquality.gov.au/standards/environmental-sustainability-and-climate-resilience-healthcare-module>

© Australian Commission on Safety and Quality in Health Care 2025