

AUSTRALIAN COMMISSION ON SAFETY AND QUALITY IN HEALTH CARE

National Patient Blood Management Collaborative Snapshot for JOONDALUP HEALTH CAMPUS



- 34.4% male and 65.6% female
- 0.7% aged under 0-19 years; 54.5% aged 20-64 years and 44.8% aged over 65 years
- 99% non-Indigenous Australians and 1% Aboriginal and Torres Strait Islander people

Table 1: Percentage of patients assessed, confirmed and managed for anaemia and iron deficiency, May 2015 to March 2017

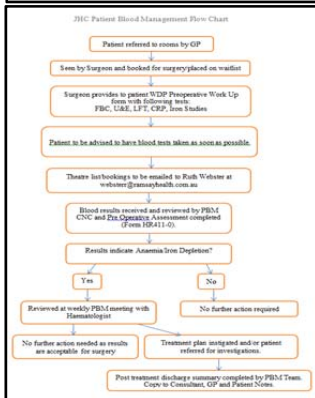
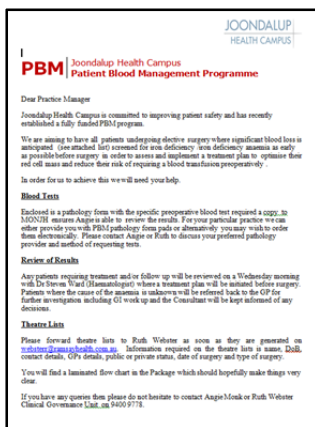
Age Range	Gender	ASSESSED		% of assessed who were CONFIRMED		% of confirmed who were MANAGED	
		% with anaemia	% with iron deficiency	% with anaemia	% with iron deficiency	% with anaemia	% with iron deficiency
0-19	Female	0.3%	0.3%	1.3%	0.0%	0.0%	0.0%
0-19	Male	0.4%	0.3%	1.3%	0.4%	2.3%	0.7%
20-64	Female	33.9%	27.6%	23.5%	40.7%	27.3%	38.6%
20-64	Male	15.6%	15.9%	9.4%	5.8%	6.8%	4.8%
65+	Female	28.2%	32.4%	32.9%	37.0%	38.6%	40.0%
65+	Male	21.6%	23.5%	31.5%	16.0%	25.0%	15.9%

KEY ACHIEVEMENTS

The tools and processes developed as part of the Collaborative has resulted in preoperative PBM becoming a recognised and essential service at Joondalup Health Campus.

Practice Engagement

Below: Practice Letter

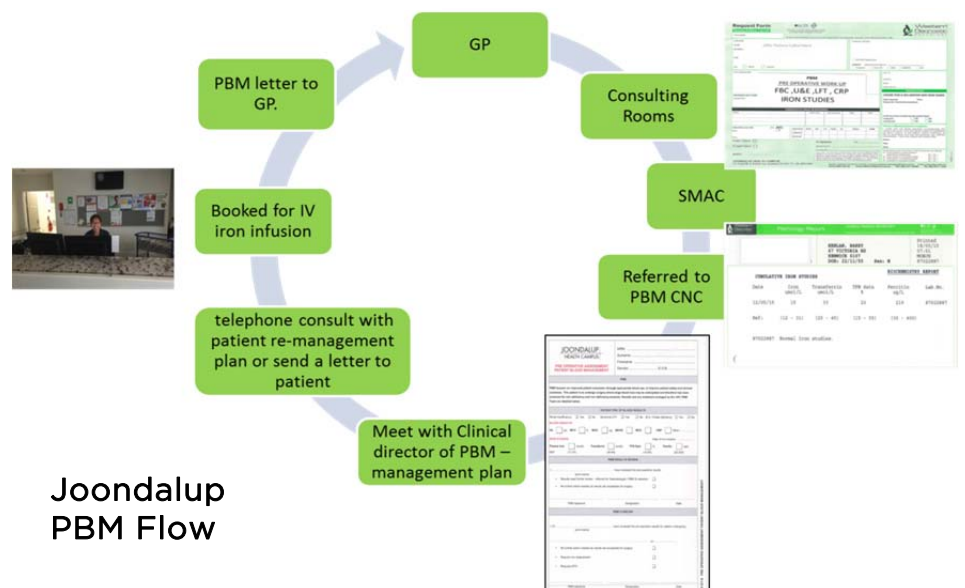
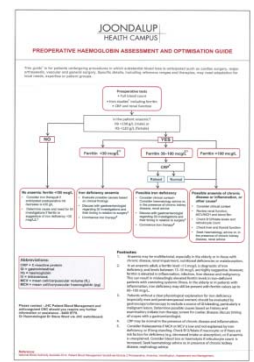


Anaemia Clinic

Left: IV Iron Infusion Chart



Right: Preoperative haemoglobin assessment and optimisation guide



Joondalup PBM Flow

